

# Girl Scouts of River Fluffs Council Camp Torqua – Edwardsville, IL

- SES provided cleanup and drainage improvements to the waterways throughout the camp. These improvements included removing litter and logs from the creek to improve flow, selectively clearing the evasive and dead vegetation, stabilizing up and downstream, and realigning the creek to improve flow through a 70'x8'x12' culvert, and improving the channel for flow through channel crossing.



# Girl Scouts of River Fluffs Council Camp Torqua – Edwardsville, IL





# Willoughby Heritage Farm – Collinsville, IL

- SES aided in the conversion of a 40-acre farm to public greenspace for the Collinsville Area Recreation District. The project included selectively clearing invasive plant species for establishment of hill side prairie grass and wild flowers, as well as re-grading slope areas to minimize water concentration.



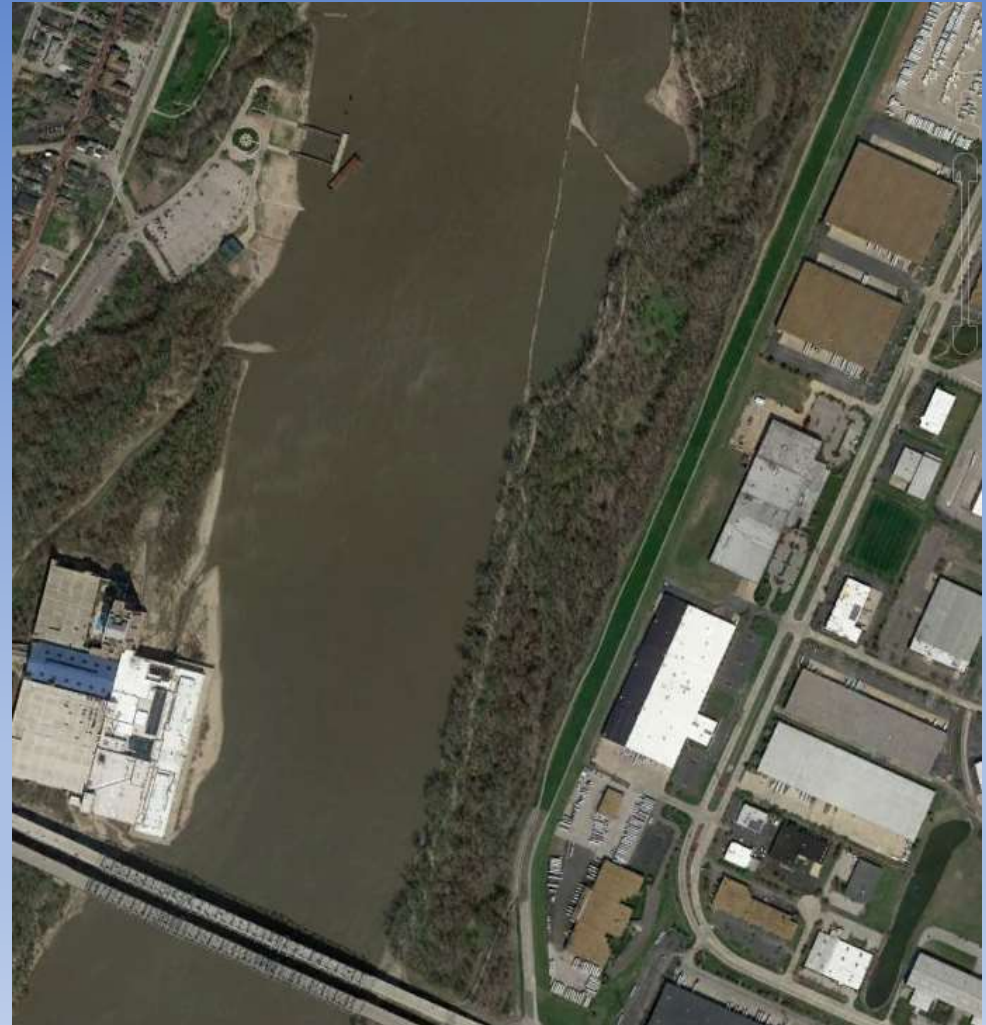
# Richland Community College/Progress City – Decatur, IL

- SES assisted in addressing drainage problems on the community college campus. The project included the installation of a rain garden off the parking lot to overflow into underground infiltration chambers, installation of a pervious pavement access road, installation of turf reinforcement mat chute for agricultural run-off, and provided hydro-seed stabilization of agricultural waterways and ditches.



# Greenway Project – Bridgeton, MO

- SES installed hydro-seeding of low and wetland mixes alongside the city's new bike path.





# Forest Lakes – Caseyville, IL

- SES hydro-seeded slopes with a bonded fiber matrix mix and installed straw waddles on slopes for 40-acres of 2 to 1 and 1 to 1 slopes.



# Forest Lakes – Caseyville, IL





# Forest Lakes – Caseyville, IL





# Forest Lakes – Caseyville, IL



# The Pietroburgo Estates – Belleville, IL

- SES provided surface and subsurface drainage for the estate and installed a 1355' sea wall around the perimeter of the lake on the premises. SES also established wild flower and native grass plots, as well as installed turf reinforcement mat chute into the lake.





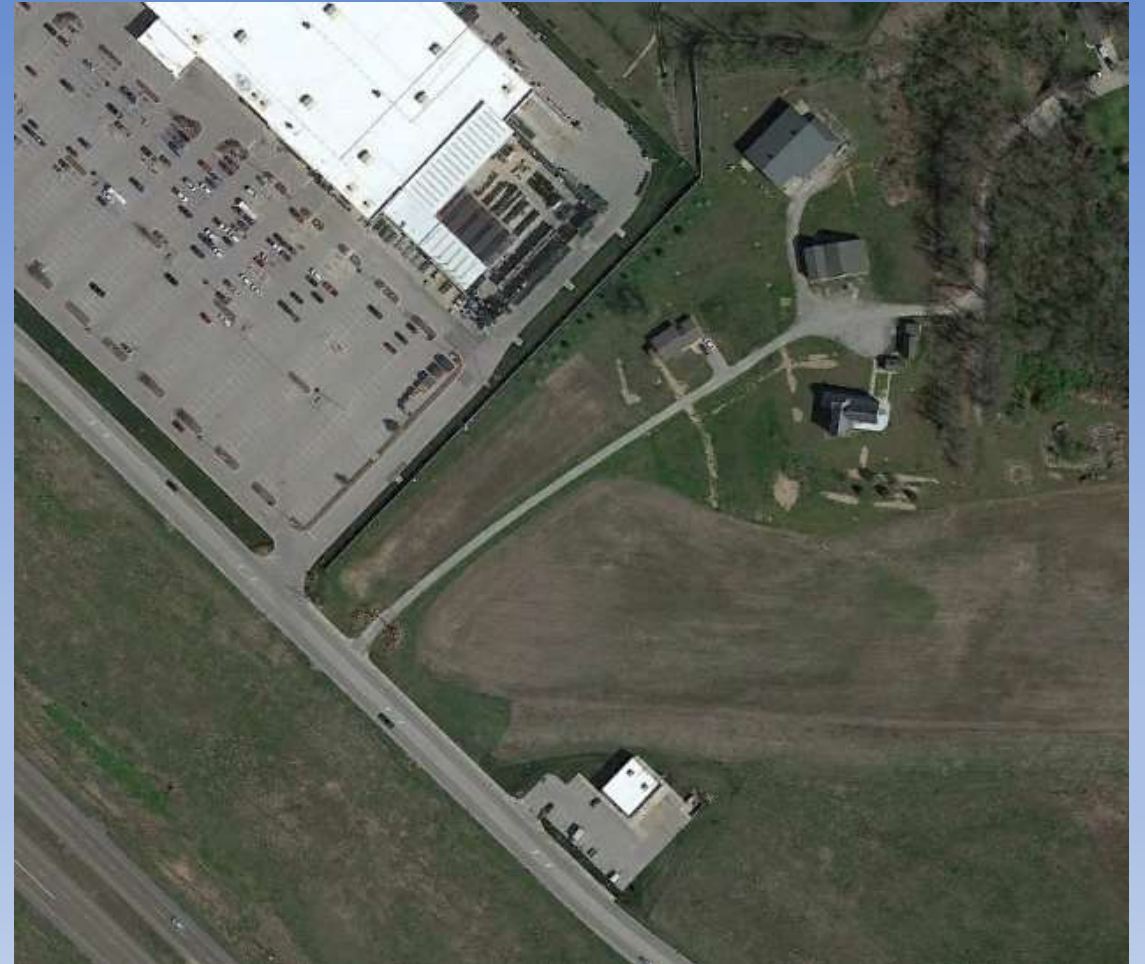
# O'Fallon Sportsman Club – O'Fallon, IL

- SES provided site work for the new club, including site preparation, selective clearing of dead and evasive vegetation, site drainage for the club house parking lot and road, clearing of the dam of vegetation, and facing the dam with rip-rap.



# Heet Farm Move – Belleville, IL

- SES performed site work for the realignment of pre-existing buildings in order to allow for a new development. This project included installing the main water line to the farm, splicing the line to multiple buildings, digging a foundation for a moved house, installing storm drains throughout the property, running electrical conduit to all buildings, installing erosion barriers and slope checks for storm water runoff, and doing archeological digging for Phase II of the project.





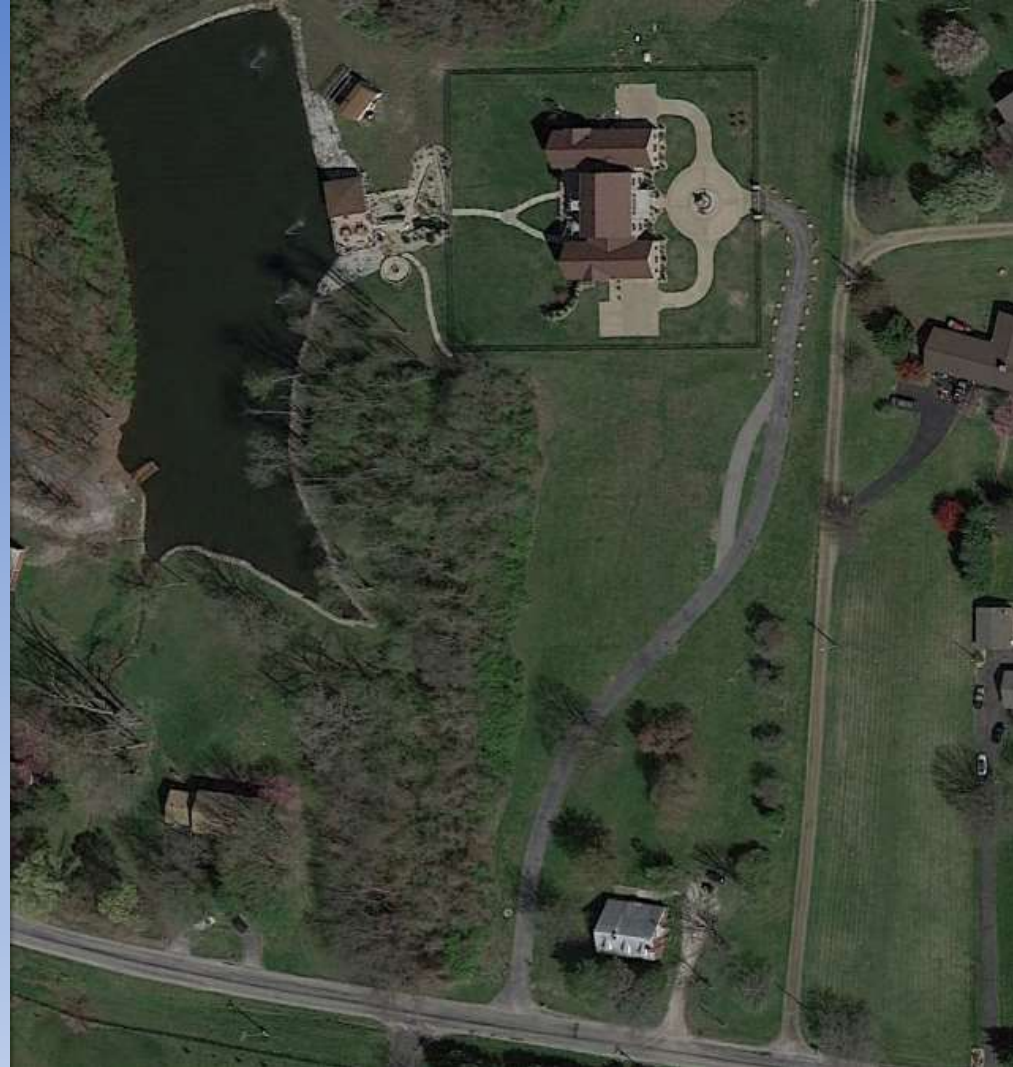
# ACE Grease – Millstadt IL

- SES Built three cell wastewater treatment lagoon, including installation of 250'x85' one piece 40 mil liners. Also demolished and cleaned up, as well as salvaged a 160-acre hog farm, rendering plant, and grease facility.



# Brandon House – Belleville, IL

- SES performed site clearing and preparation for a multi-million dollar residence. The project included the construction of a private road and drive to the residence, grading the site, constructing multiple 12'x45' retaining walls, installing and maintaining an erosion control barrier, installation of site lighting, sod hydro-seeding, and straw blanketing, as well as landscaping and boulder installation.





# Alton High School – Alton, IL

- SES performed final grading and hydro-seeding of 20 plus acres of property.



# Stiritz Horse Farm – Belleville, IL

- SES performed site clearing for multiple residences on the farm, constructed multiple private roads, improved waterline throughout the property, ran electrical conduits to multiple outbuildings and barns, and performed selective demolition and excavation on the million dollar addition, including hauling of debris.





# Stiritz Residence – Forest Park, MO

- SES performed site clearing and preparation of a multi-million dollar addition to the property. The project included re-grading the property to accommodate changing storm water laws, construction of a 40' retaining wall to hold the grade on the property, installation of a new sanitary and storm water sewer, excavation and preparation of the carriage house for a move across the property, installation of a bamboo privacy fence, installation of subgrade for a previous payment driveway, and backfilling and re-grading on multiple buildings.



# Dickerson Petroleum, Camp Matawka – Shiloh, IL

- SES made dam improvements to the Camp Matawka location due to neglect. The project also included removing vegetation and decaying roots from the dam, re-compacted soil and mixed bentonite in soil to stop leaks, hard armored tow of the dam with gabion baskets, added rip-rap along the drainage ditch to secure the tow of the dam, removed existing spillway and rebuilt spillway using gabion baskets and gabion mattresses, hard-armored the shore line for protection from waves, and re-established the groundcover with native grasses and wild flowers.





# U.S. Department of the Interior, St. Louis Arch and Jefferson Memorial – St. Louis, MO

- SES installed anti-terrorism compliance measures, excavated and placed concrete vaults for hydraulic equipment that controlled hydraulic pipe bollards for the arch grounds, and re-established the vegetation.



# Bi State Metro-Link Station – Belleville, Shiloh, and Scott AFB Stations in IL

- SES finish work and grading, planted trees, installed sod, irrigation, slope stabilization, and operation clean-up.





# Caminak Residence – Swansea, IL

- SES removed a failing driveway culvert and installed a larger culvert with gabion head walls to support the driveway.



# Cohn Residence

- SES performed selective demolition, excavation and grading for addition. Sewer line was extended, roof drainage was tied into storm sewer system, landscape plantings, and irrigation installed





# Lanter Estate

- SES completed site grading, backfilling, driveway prep, and installed sod.



# Lanter Estate

- SES performed all sitework for backyard entertainment and pool area footings, grading, sod and retaining wall installation. Built and shaped privacy berm and drainage.





# Mason / Conway

- SES built overflow inlet and regraded over sludge pits.





# Edwardsville, IL

- Slope was undercut due to storm surges and debris buildup in creek caused channel to divert and undercut slope. SES cleared the slope of existing vegetation, pulled back top of the slope, regraded and shaped slope. Topsoil was placed underneath turf reinforcement mat which was secured with 18" staples. 450 ton of rip rap was placed to reinforce the toe of slope along with fabric filter membrane. Area was seeded with native slope mix.





# Edwardsville, IL





# Turnbull Residence



- SES completed work to stop further damage to slope by tying residential downspouts to drain line down to creek.





# Madison County Health Department

- SES Installed French drain with 8" perforated drain pipe. Completed seeding, blanketing, and tied in downspouts to drain



# Padgett Building and Remodeling

- SES performed selective demolition, basement excavation, site grading, sod establishment, and drainage.





# University of Illinois Bell Tower

- SES performed sitework and final grading.



# U.S. Army Corps of Engineers, Powerhouse West Terrace Drain Rehab Phase II – Michels Corporation

- Project managed and work performed, reclamation of slope, place topsoil, seeding, and erosion control.





# Center Stanton Public School

- Designed project, bid, managed project and performed work for playground removal and reshape, sidewalk and driveway installation. Finish grading, soil preparation, and sod installation



# Additional project photos

